



**MIRRO**  
LIVING

# Annex

Schlossweg 5

Wohnung	An_201
Geschoss	2./3. OG
Zimmer	5.5
Wohnfläche	135.5 m <sup>2</sup>
Balkon	15.1 m <sup>2</sup>
Keller	ca. 13.7 m <sup>2</sup>

Beratung & Verkauf

**KM·P**

A JULIUS BAER GROUP COMPANY

**Kuoni Mueller & Partner AG**

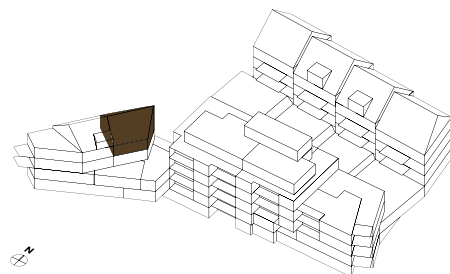
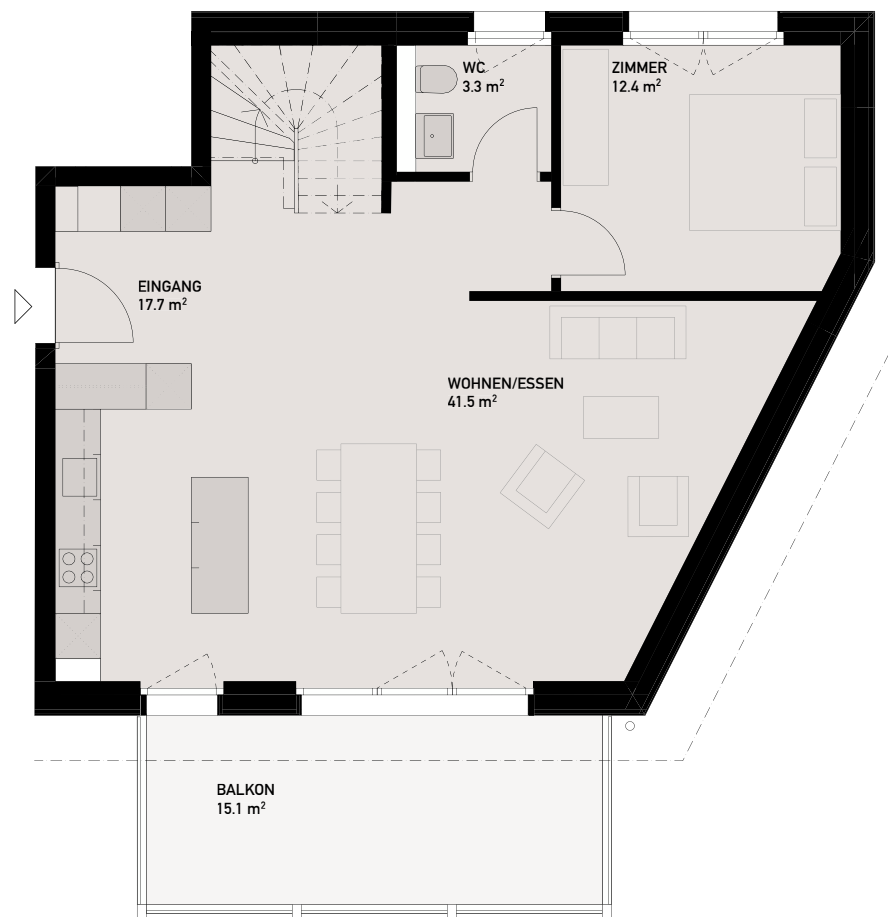
Schweizergasse 21

8001 Zürich

T: +41 (0)43 344 65 65

residential@kmp.ch

2. OG



MST 1:100





**MIRRO**  
LIVING

# Annex

Schlossweg 5

Wohnung	An_201
Geschoss	2./3. OG
Zimmer	5.5
Wohnfläche	135.5 m <sup>2</sup>
Balkon	15.1 m <sup>2</sup>
Keller	ca. 13.7 m <sup>2</sup>

Beratung & Verkauf

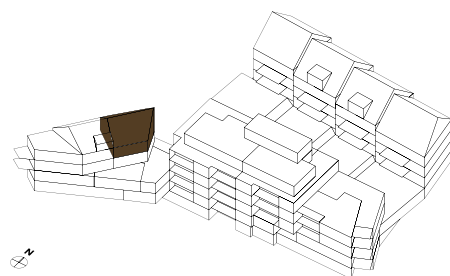
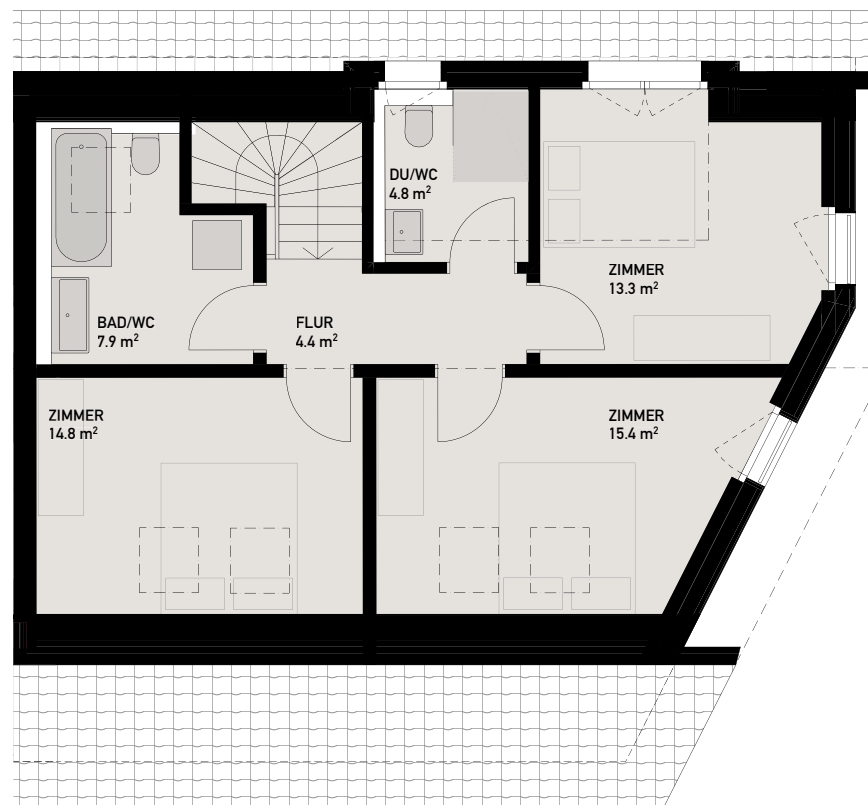
**KM·P**

A JULIUS BAER GROUP COMPANY

**Kuoni Mueller & Partner AG**

Schweizergasse 21  
8001 Zürich  
T: +41 (0)43 344 65 65  
residential@kmp.ch

## 3. OG



MST 1:100

