



**MIRRO**  
LIVING

# Neubau

Neue Dorfstrasse 27a

Wohnung	Ne.a_101
Geschoss	1. OG
Zimmer	4.5
Wohnfläche	124.7 m <sup>2</sup>
Terrasse	15.1 m <sup>2</sup>
Keller	ca. 11.8 m <sup>2</sup>

Beratung & Verkauf

**KM·P**

A JULIUS BAER GROUP COMPANY

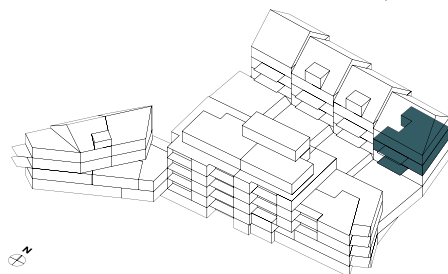
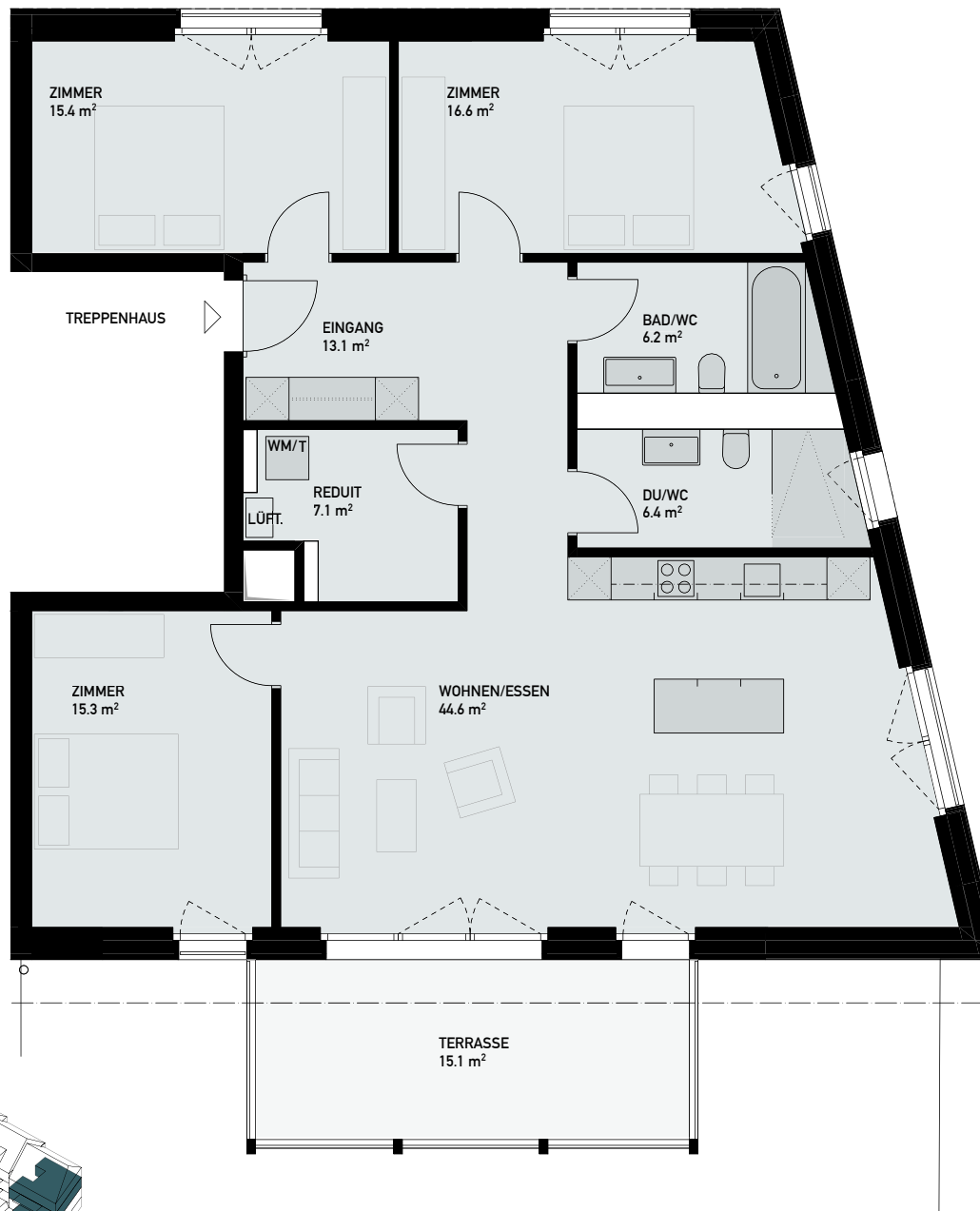
**Kuoni Mueller & Partner AG**

Schweizergasse 21

8001 Zürich

T: +41 (0)43 344 65 65

residential@kmp.ch



MST 1:100

