



MIRRO
LIVING

Neubau

Neue Dorfstrasse 27a

| | |
|------------|-------------------------|
| Wohnung | Ne.a_102 |
| Geschoss | 1. OG |
| Zimmer | 4.5 |
| Wohnfläche | 120.5 m ² |
| Terrasse | 15.1 m ² |
| Keller | ca. 11.4 m ² |

Beratung & Verkauf

KM·P

A JULIUS BAER GROUP COMPANY

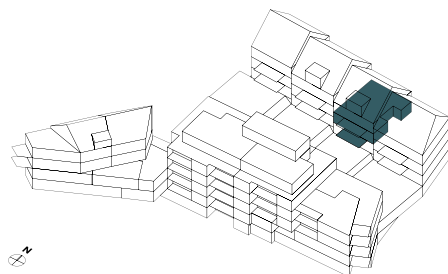
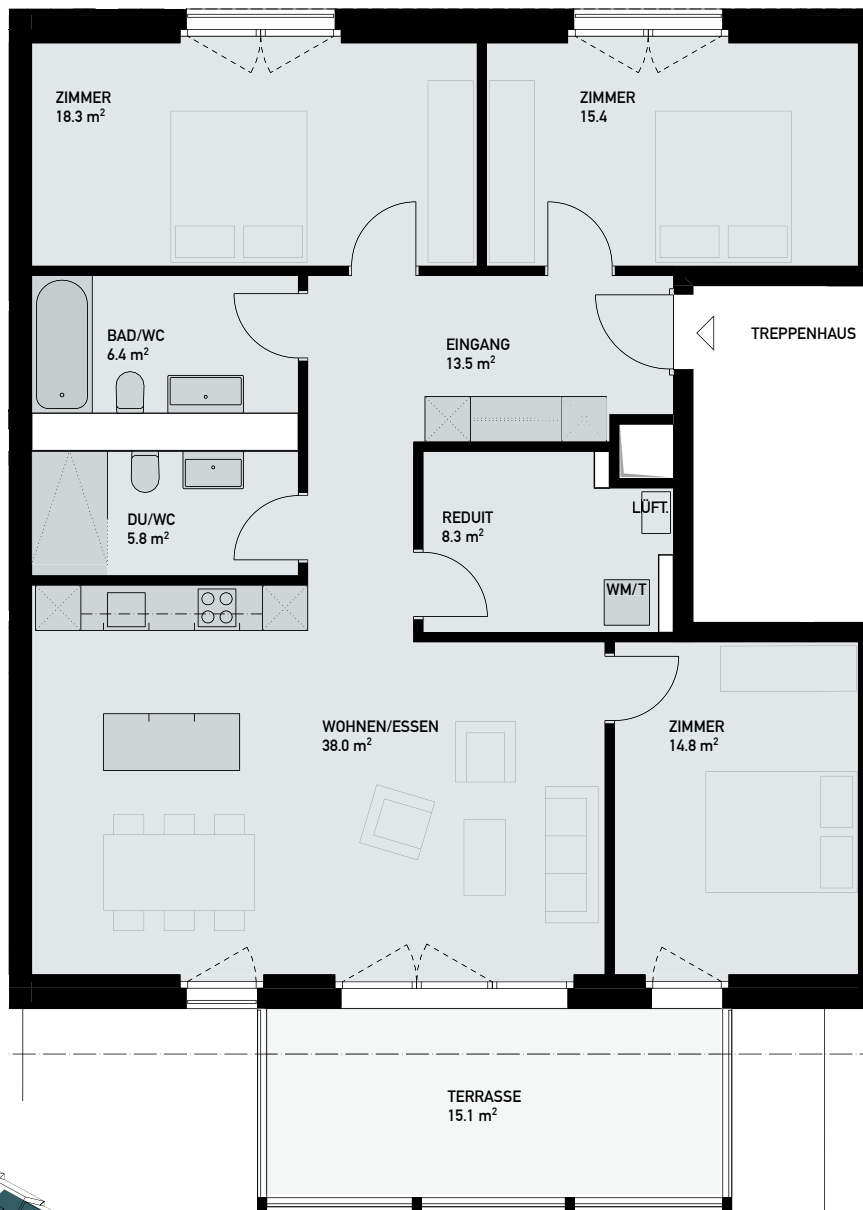
Kuoni Mueller & Partner AG

Schweizergasse 21

8001 Zürich

T: +41 (0)43 344 65 65

residential@kmp.ch



MST 1:100

